

食用金箔

HANAFUBUKI

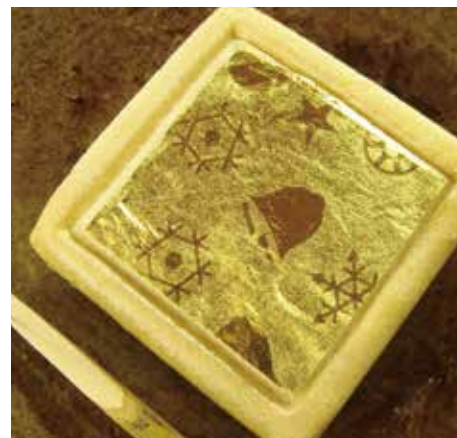


KATANI SANGYO co.,ltd.

● 食用藝術箔 Edible art foil

所謂藝術箔是在金箔上做出霧面和光澤，用光影表現來呈現圖案或文字，持有專利權的製作手法。並且和一般的食用金箔相同，未使用任何藥品等其他物質，可以安心地使用。

* 藝術箔是我司擁有智慧財產權的原創製作手法



Art foil is a patented method of making matte and glossy parts on gold leaf and expressing patterns and characters with that contrast. Of course, no medicines are used at all, so you can use them with confidence, just like regular edible gold leaf.

* Art foil is an original recipe for the patented night. (Product / process patent No. 3464194)

表現度超群！例如店鋪名稱、各種活動指引、各種消息、插圖等等都可以呈現。

Excellent in degree of appeal! For example, store names, event information, various messages, illustrations etc. can be inserted.

● 金箔粉加工實例 Cutting example

1mm 網眼的金粉可以表現出文字或圖案

If it is 1 mm mesh, it is possible to express letters and patterns of gold powder.



● 食品檢查結果 * 來自食品衛生檢查指針“微生物篇” Food inspection results According to the Food Hygiene Inspection Guidelines "Microorganism Edition"

鎘	Cadmium (material)
鉛	Lead (material)
重金屬(溶在4%乙酸中)	Heavy metal (Elution 4% acetic acid)
過錳酸鉀消費量(溶在水中)	Consumption of potassium permanganate (elution water)
一般生菌數	General viable cell count
大腸菌數	E coli group
黃色葡萄球菌	Staphylococcus aureus
大腸菌數	E coli
耐熱性菌	Thermostable bacteria
蠟樣芽孢桿菌	Bacillus cereus
乳酸菌	Number of lactic acid bacteria
真菌	Fungus
沙門氏菌屬	Salmonella bacteria
梭菌屬	Clostridium spp

未檢出 (10μg/g 未滿)	Not detected (less than 10 μg/g)
未檢出 (10μg/g 未滿)	Not detected (less than 10 μg/g)
未檢出 (1μg/ml 以下)	Not detected (less than 1 μg/ml)
0.5μg/ml	0.5 μg/ml
3000 以下 C/g	3000 or less C/g
陰性	negative
陰性	negative
陰性	negative
3000 以下 C/g	3000 or less C/g
陰性	negative
1000 以下 C/g	1000 or less C/g
1000 以下 C/g	1000 or less C/g
陰性	negative
300 以下 C/g	300 or less C/g

* HANAFUBUKI的MSDS另外提供 * 品質保證期限：無特別限制
* 食品添加物：食品衛生法施行規則(厚生勞動省第76號平成10年9月18日修正)所訂，
可以作為非化學性合成物的食品添加物使用。

*In addition, safety data sheet MSDS concerning “Hanafubuki” is available separately.
*Quality retention deadline: No particular limit
Food Additives: Can also be used as a food additive other than scientific synthetic products specified in the Food Sanitation Law Enforcement Regulations (Japanese Ministry of Health, Labor and Welfare No. 76, revised September 18, 1998)

不管是食品、公益、保養等用途的金箔都請交給我們！

カニ産業株式会社

6-33 Simoshin-cho, Kanazawa 920-0910 Japan
PHONE: +81-76-263-6111
FAX: +81-76-222-3433

中文 <https://www.katani.co.jp/chinese/archives/117>
英文 <https://www.katani.co.jp/english/archives/48>

因為是可食用的商品所以可以放心地使用
食用金箔 The edible gold leaf
HANAFUBUKI

HANAFUBUKI是專門用於食品所製作的高純度金箔。作為創業100多年的老字號金箔廠的經典商品，有著全國各地的製酒公司15年以上的採用實績，我們承諾呈現豪華效果的同時保證「食用安全」。

As it is edible it is used with confidence.
The edible gold leaf "Hanafubuki"

We boast more than 15 years of employment results from breweries throughout the country. It is a signboard product of a long-established gold leaf maker that has been established for over 100 years, and promises "safety to food" as well as luxurious production.



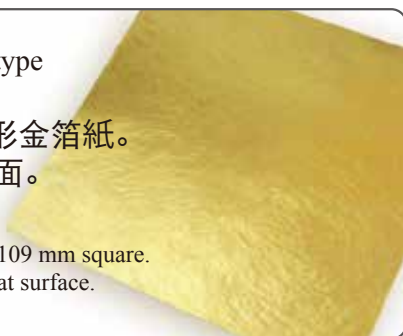
HANAFUBUKI同時有薄紙類型和金箔粉類型

There is a foil type and a cutting type for "Hanafubuki"

薄紙類型 Foil type

一般109mm的正方形金箔紙。
可應用在廣大的平面。

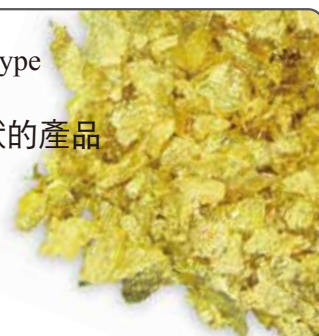
It is usually gold leaf with 109 mm square.
You can use it on a wide flat surface.



金箔粉類型 Cutting type

把金箔紙切碎成薄片形狀的產品

It is made by crushing the gold leaf finely and making it like a flake.



商品特徵 Product features of "Hanafubuki"

完全未使用任何糯米紙、可食用菲林
純度高於一般使用最多的金箔紙(4號色)
從金箔到金箔粉採用一貫性工程，能夠更加嚴謹的管理品質。

No oblate, edible film, etc. are used at all.
The purity is higher than that of gold foil (No. 4 color) that is widely used in general.
The process of making cuts from gold leaf is consistent and we are doing stricter quality control.

成分及含有量

金：96.18% 銀：3.81% 銅：0%

Gold: 96.18% Silver: 3.81% Copper: 0%

HANAFUBUKI內含的金、銀成分，是受到厚生勞動省正式承認的食品添加物(既有添加物)用染色劑以及製造溶劑。*既有添加物=高安全性一般的金箔都含有銅的成分，但是HANAFUBUKI裡面完全不含銅。*銅雖然也是安全的食品添加物，但是是屬於指定添加物，有限制攝取量。

Gold ingredients and silver, which are ingredients of "Hanafubuki", are officially approved as food color additives and manufacturing solvents from the Japanese Ministry of Health, Labor and Welfare. Unlike traditional gold leaf, "Hanafubuki" is composed only of gold and silver, and copper is not included. Copper is a safe food additive, but it is a designated additive, and its intake has been limited. Copper is also a safe food additive, but it is a designated additive and restrictions are imposed on intake amount.

嚴謹的品質管理 Strict quality control

本產品作為食用產品，為了能讓大家安心使用，特別在生產工程部分加倍認真。從原材料的運輸到加工、選別、包裝，特別用心注意在進行品質上的管理。有需要請詢問

"Hanafubuki" carefully examine the production process so that it can be used safely as food. From the procurement of raw materials to processing, sorting and packaging, quality control is carried out with extreme care.

針對業者的價格、起訂量 Vendor prices, lots

價格會因為金屬金價格的波動而變化
最小起訂量：薄紙類型100張，金箔粉類型10KG

Price changes due to fluctuations in the price of metal
Minimum lot: 100 sheets of foil type, 10g of mesh type.
Please feel free to contact us when you purchase.

有提供
金箔專用竹筷

金屬瓶和湯匙等會產生靜電、讓金箔黏住。但如果使用鼻會產生靜電的金箔專用竹筷，就能夠輕鬆的使用金箔紙。

We can prepare a bamboo leaf for gold leaf only. Metal tweezers and spoons will be charged with static electricity and gold foil will stick. However, if the special purpose tong of bamboo that does not generate static electricity, handling of the gold foil becomes easy.

金箔粉的網眼規格 Cutting mesh type

除了下圖尺寸以外，還能根據客戶用途調整金箔粉的網眼規格 Besides the sizes shown below, you can adjust the mesh size according to your application.



根據用途提供各種容量、規格、包裝方式 It is compatible with various capacities, sizes and packaging forms depending on the application.

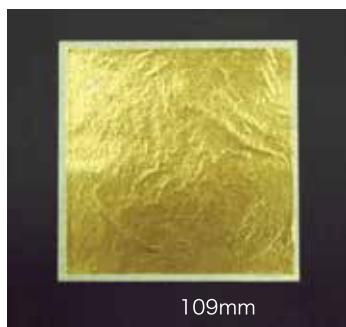
可以根據客戶的作業環境提供不同的包裝方式，全部裝一袋或是依照使用量分小包裝。

Depending on the volume, it can be packaged in a single bag, weighted and packaged separately for individual use, or packaged according to the customer's work condition.

薄紙類型
Foil type

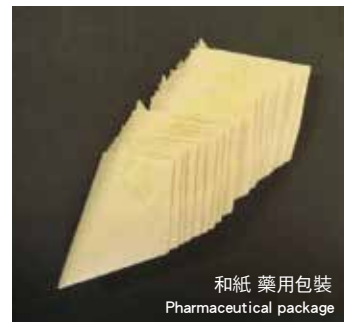
標準規格有109mm正方形和1/4規格
也能夠對應其他規格，有需要敬請詢問
薄紙類型的包裝採用玻璃紙

Usually 109 mm square and 1/4 size are available. Please feel free to contact us for other sizes.



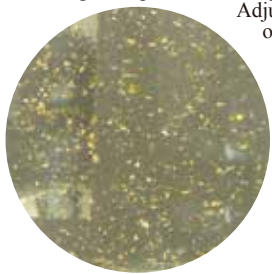
金箔粉類型
Cutting type

除了有業務用和紙、玻璃紙的包裝以外，
也可以選用塑膠盒、瓶裝等包裝方式。
* 可以依照工作環境提案不同的包裝方式
In addition to Japanese paper and glassine paper packaging for business use, plastic cases and glass bottles can also be accommodated.
We propose a form that suits the work environment.



製作放入金箔粉的酒類等商品的時候，金粉的飄浮程度要靠網眼規格來做調節。想要讓金粉在酒瓶內漂浮地美輪美奐，對網眼規格的調節與管理是必不可缺的。

In the case of the product which put into the gold leaf of the mesh type, the condition of the ups and downs of the gold depends on the adjustment of the mesh size. Adjustment and management of mesh size is essential to make it dance beautifully in sake.



製作既有商品、原創商品 Ready-made, original product making



我司已有各種針對一般用戶的既有商品。標籤、貼紙與外盒等，都可以變更為貴司專用的設計。

A variety of ready-made products are also available for general users. It is also possible to change labels, seals and cases to your own products.